

A close-up, low-angle shot of the Rustler 57 sailboat's deck and hull. The boat is white with a dark hull and a wooden deck. A large white sail is visible, supported by blue straps. The boat is moving through the water, creating a large splash. The background shows a rocky coastline under a blue sky.

*Rustler*  
YACHTS

*Rustler 57*



Rustler57



## Introduction

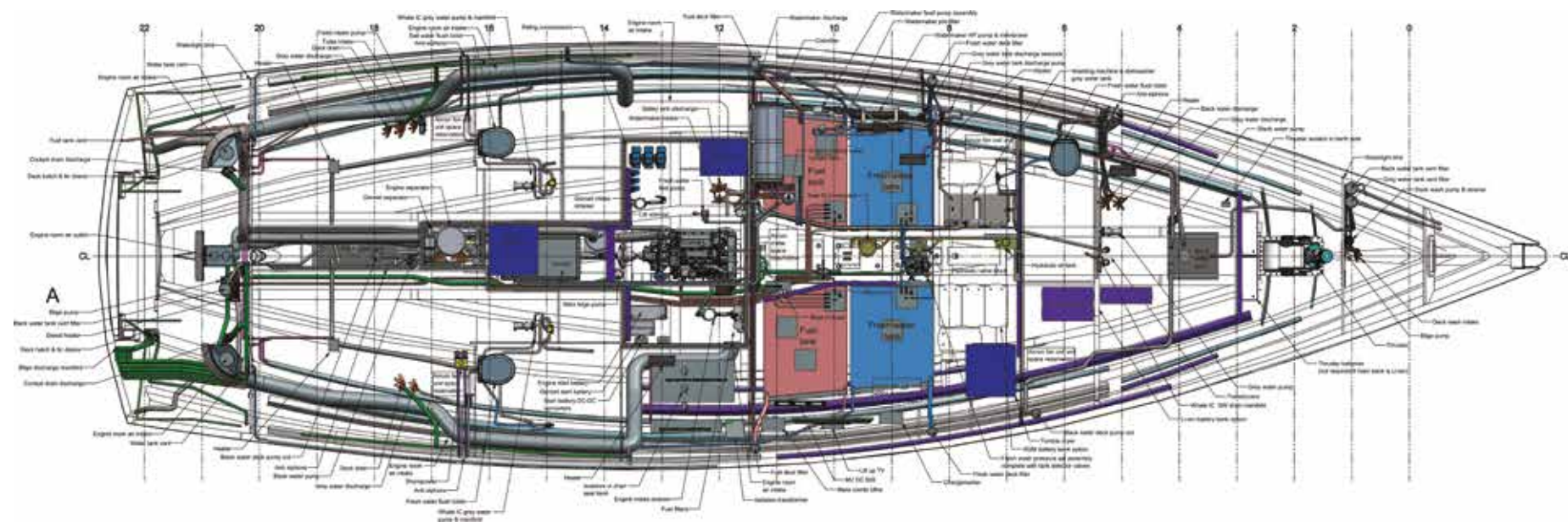
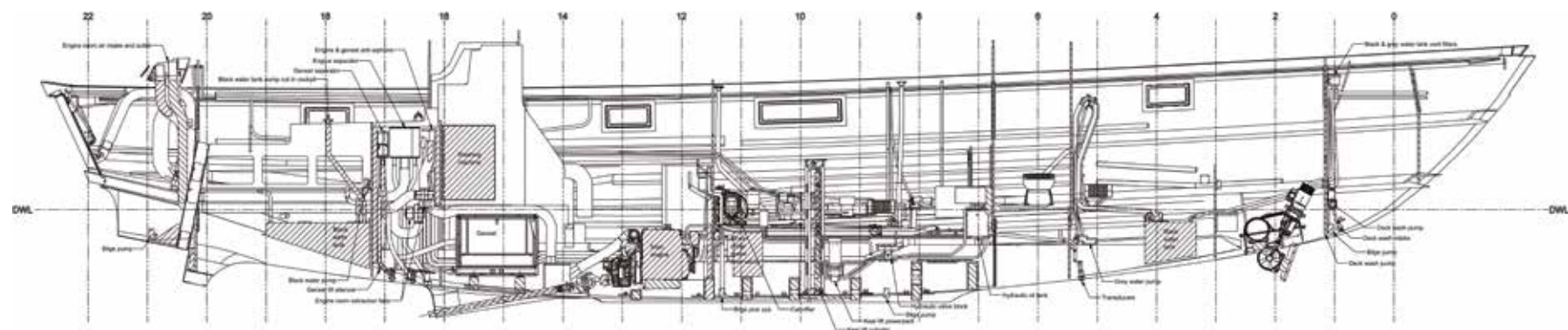
Rustler is a name that needs little introduction. It has always stood for fine, civilised performance cruising yachts, designed and produced by skilled craftsmen.

The Rustler 57 is the flagship of the Rustler range.

Designed by Stephen Jones, the design draws heavily on established yachts in the range, and is a classic Rustler in terms of the looks, build quality, and general ethos of concept. There are some firsts; such as the offered option of a variable draft – boat number one has a fixed draft of 2 metres, with the addition of a 1.8 metre centreboard. Overall, the new model is a classic in both design and construction. A true Rustler.



*Rustler 57*





## The New Rustler 57

The new Rustler 57 is designed as a powerful cruiser. Fast, comfortable, seaworthy and beautiful. With low topsides and an aft cockpit, the design is a happy departure from the hoards of lookalike centre cockpit yachts which have become the norm in this segment.

On deck, there is an abundance of low flat space – easy to move across at any angle, the design prioritises easy handling and safety. The comfortable aft cockpit incorporates a table and single large diameter wheel.







## Attention to Detail

Every one of our boats is hand-built - superlative quality is found in every curve, every surface, every detail. Built for those who understand that quality is something you can't simply bolt on at the end of a production line.

Each Rustler owner enjoys a uniquely close relationship with the team that builds their boat, beginning with the process of the individually tailored design and build, continuing through the hand-over trials and then reassuringly throughout their ownership. Long term support is of paramount importance to us.





Rustler57



## Sailing

The Rustler 57 in standard format comes with a cutter rig, giving a fine combination of sail plan options for any given weather. Having the fore-triangle sail plan split into two reduces the sheet loads involved, and the high cut clew of the Yankee allows much clearer views forward whilst underway.

The staysail can be specified as self tacking, with the single sheet led back to the cockpit. The yankee sheets are led back to electric primary winches. A hydraulic vang and backstay are standard.

The mainsheet arrangement is from the end of the boom to a track aft of the cockpit, with the sheet led forwards and then back to a winch to the side of the helm position.

All sail controls are led back to the cockpit, enabling the boat to be sailed short-handed. Single-handed if you so wish. Various control system are available including electric furling headsails, in-mast or in-boom mainsail reefing systems. Again, all controlled from the cockpit.



*Rustler 57*



Rustler57





Rustler57



Rustler 57











Rustler57



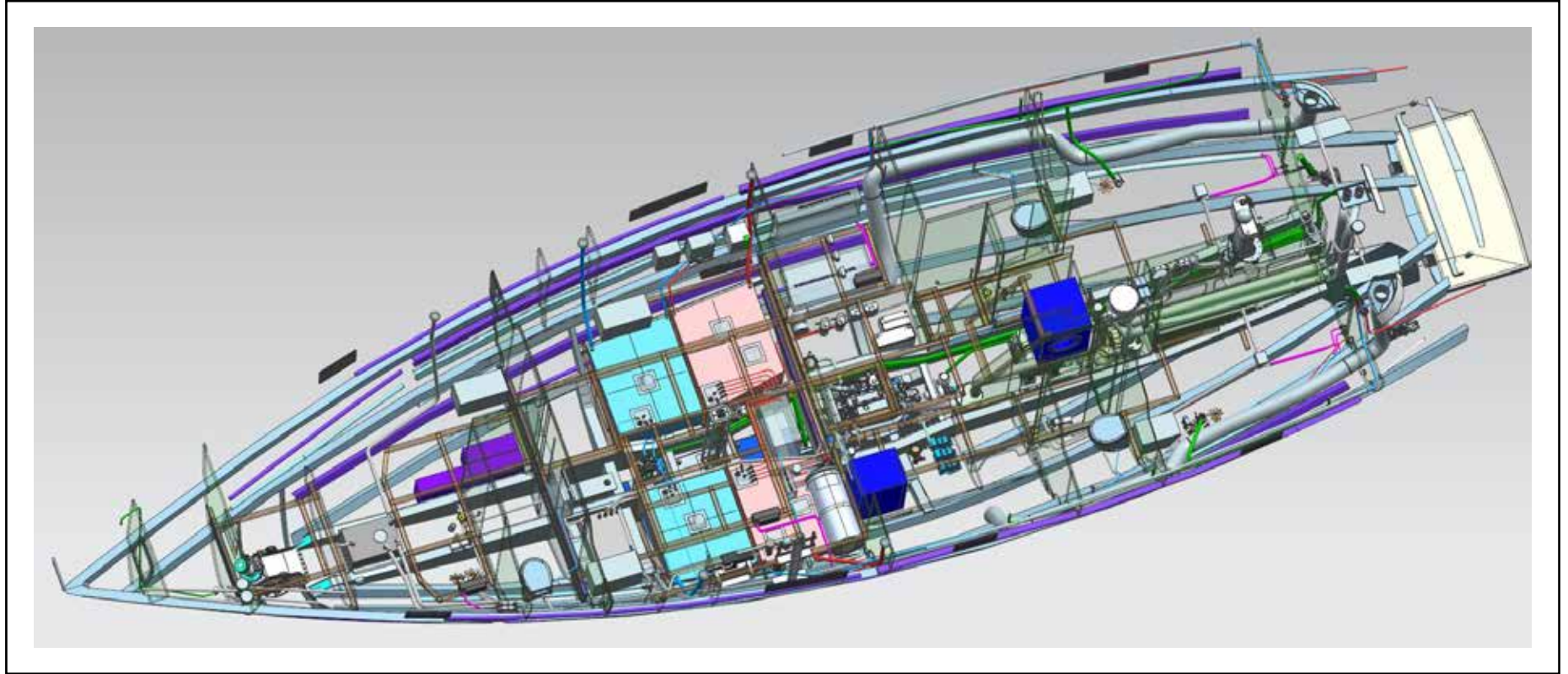








Rustler57



Rustler57



Rustler57



## Interior

The interior is a masterclass in design. Predominately laid out on one level, and easy to negotiate underway in a heavy sea, the interior space has been cleverly optimised for comfort at sea and in port.

The design shows an abundance of natural light entering the whole boat via discrete hull portlights, these together with sensibly placed overhead hatches allow a very airy feel to the living areas. A traditional saloon, designed to use the whole of the considerable beam of the boat, gives a real feeling of space.

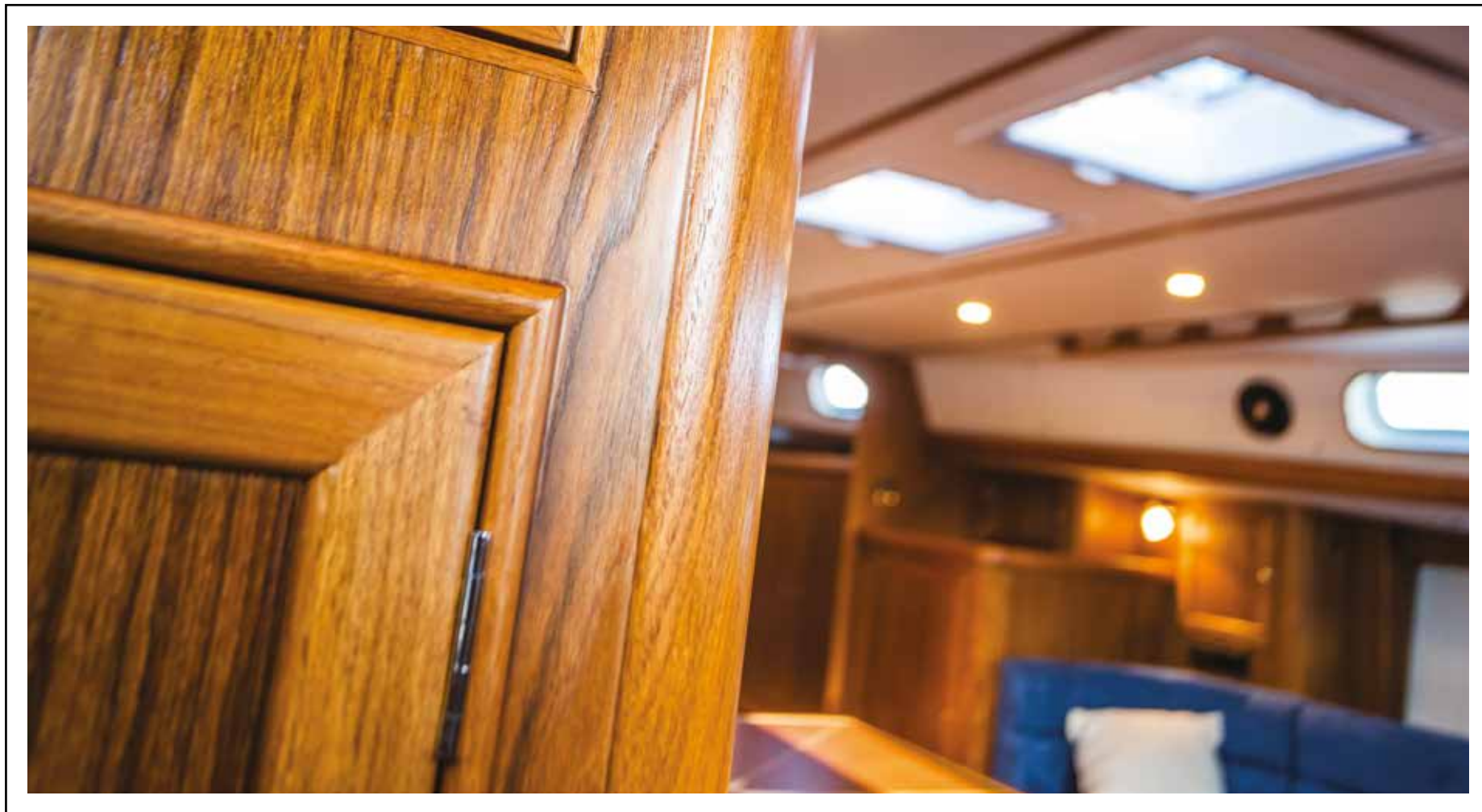
The forward owner's cabin boasts a full walk around king sized bed, with plenty of hanging space and drawers, together with a highly appointed heads and separate shower. There are two aft cabins which are flexible in configuration, and offer an abundance of stowage. Each has a toilet and shower.

The boat features an impressive navigation station featuring a dedicated full sized chart table, a book case, chart draw etc.

It will not be a surprise to find that the whole boat is built beautifully, by hand, in our modern production facility in Falmouth, Cornwall. Perfect joinery detailing throughout, all hand finished to suit the owners taste.











Rustler57



Rustler57

# Rustler 57

## Principal Dimensions

Length Overall	57'	17.40m
Length Waterline	47'	14.49 m
Beam	16' 5"	5.00m
Draft Fixed Keel	8' 6"	2.59m
Draft Lifting Keel (LK)	6' 6"/11'6"	2.00m/3.50m
Displacement	60,000 lbs	27.2 tonnes
Water Capacity	200 gallons	910 Litres
Fuel Capacity	209 gallons	950 Litres
Main Sail Area	969 sq feet	90 sq m
Yankee Area	947 sq feet	88 sq m
Staysail Area	312 sq feet	29 sq m
Air Draft	78' 7"	23.99 m
Rig Dimensions	I= 68.7 ft (20.93m)	
	J= 22.24 ft (6.78m)	
	P= 66.11 ft (20.15m)	
	E= 26.74 ft (8.15m)	





Beautiful Yachts  
Beautifully Built



*Rustler*  
YACHTS



## CONTACT US

Rustler Yachts Ltd  
Maritime Buildings  
Falmouth Road  
Falmouth  
Cornwall  
TR10 8AD  
UK  
Telephone: 01326 310120  
Email: [info@rustleryachts.com](mailto:info@rustleryachts.com)  
[www.rustleryachts.com](http://www.rustleryachts.com)



*Rustler*  
YACHTS