

# Rustler 44



Beautiful Yachts Beautifully Built

# Rustler 44

---



# Beautiful yachts, beautifully built

**Powerful, comfortable and exceptionally well-behaved, the Rustler 44 is a welcome addition to the ranks of classic blue water cruising yachts.**

Rustler yachts have always had their own distinctive character - the company has a history of creating yachts that become design classics. Designed by Stephen Jones, the Rustler 44 is a fast, blue water cruiser combining exceptional performance with spectacular comfort.

Accommodation is designed for living in safety and comfort when under way. A raised chart table allows a good view all around whilst sailing to the chosen destination. This is complemented by the raised saloon area which offers a panoramic view once you arrive. The light and airy feel of the 44 interior is carried throughout the boat; a spacious galley, two seating areas, together with vast cabins make both entertaining and living in harbour everything you desire.

Every Rustler is built to take the worst of prevailing seas, to look after her crew and inspire every yachtsman with blue water aspirations. The Rustlers heavy weather characteristics are why many are sailed on long distance cruises. With a modern sail plan, the Rustler 44 is easily handled by two people, a superb performance combined with a comfortable motion underway will allow easy long distance passage making.





# Construction

The Rustler 44 is immensely strong. Lay-up is by hand; as well as the usual woven rovings, layers of quadaxial rovings add strength. Full-length stringers and transverse frames are laminated to the hull sides and bottom for strength and to dissipate rig and keel loadings. The deck and coachroof is a balsa sandwich, with ply or aluminium backing pads in way of winch bases, sheet tracks, and other deck fittings. The superstructure moulding, with an L-shaped up-stand at the deck edge, is laid onto a flange on the hull and then bonded and through-bolted. The up-stand creates a substantial moulded bulwark surmounted by a hefty teak toe cap-rail.

Structural bulkheads are glassed to both hull and superstructure. The Furniture is built up on timber bases, a very labour intensive method that is only used by low volume builders, and lends a satisfyingly solid air. Joinery is all by hand, and is to Rustlers extremely high standard.

On deck, safety is a priority. All controls are lead aft to the deep spacious cockpit. All lines fall easily to hand – even when sailing single-handed.









Reinart







# Interior

High class joinery, mixed with stylish practical designs set Rustler Yachts apart. Quality is found in every curve, every surface, every detail.

Many customers wish to be involved from the early design stages of their personally specified yachts, shaping the specification, interior layout and overall appearance to meet their personal requirements.

Rustler's attention to detail, the fit and the finish, is as perfect as it can be: our goal is to produce attractive and individual yachts that are a pleasure to own and sail.

At the heart of Rustler's philosophy is a firm commitment to developing truly unique yachts that are distinctive in looks, design and performance.





# Rustler

The Rustler team encourage owners to visit the factory at an early stage and to take an active part in the planning of the yacht. Each Rustler owner enjoys a uniquely close relationship with the team that builds their boat.

Our dedicated team of highly skilled craftsmen are delighted to incorporate owner's modifications and this flexible approach encapsulates the individual formula which today's Rustler owner seeks. The results are a matter of some pride to the owner and builder, the best materials and finest craftsmanship being maintained throughout to create an attractive yet practical environment.

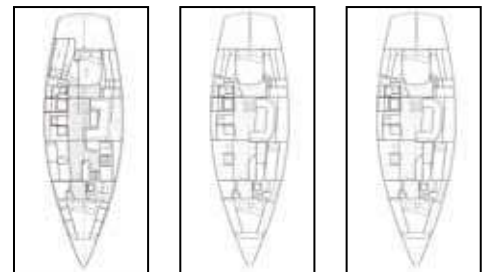
A tour of our Falmouth facility will inevitably end with a new appreciation of the passion for fine craftsmanship and the pride in all that goes into every one of our yachts.



# General arrangement

The Rustler 44 is a fine-looking aft cockpit yacht, with moderate height to the topsides, a sweet sheerline, pleasing overhangs, and relatively low cabin top. A long fin keel combined with a huge skeg-hung rudder gives huge reassurance in terms of safety and manoeuvrability.

Interior layouts can be changed to suit owners requirements. The standard configuration above deck is a cutter rig, other options are available.



*Rustler 44*

# Performance

## Principal Dimensions

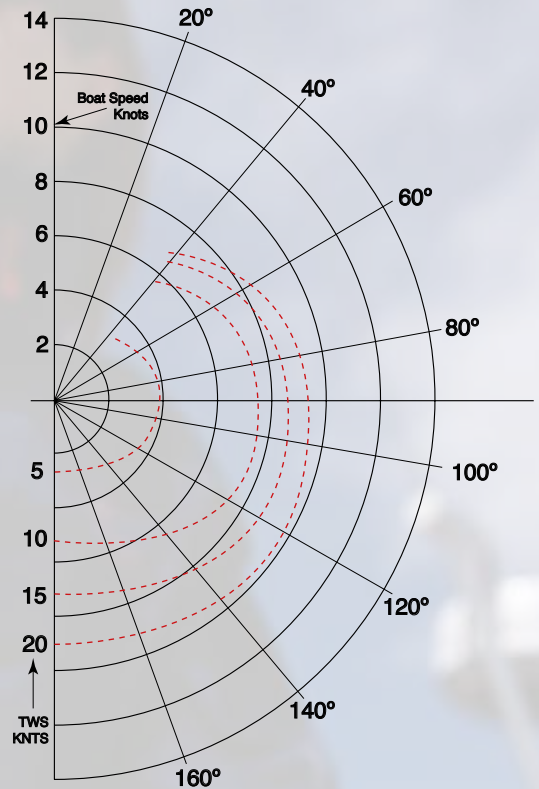
Length Overall	13.50m	44ft 6in
Length Waterline	11.04m	36ft 4in
Beam	4.20m	13ft 9in
Draft	2.10m	6ft 11in
Ballast	4900kg	10780lbs
Displacement	13700kg	30140lbs
Air draught	19.6m	64ft 4in
Sail area	92.25sq m	990sq ft
Water	730ltr	160gal

## Sail Areas

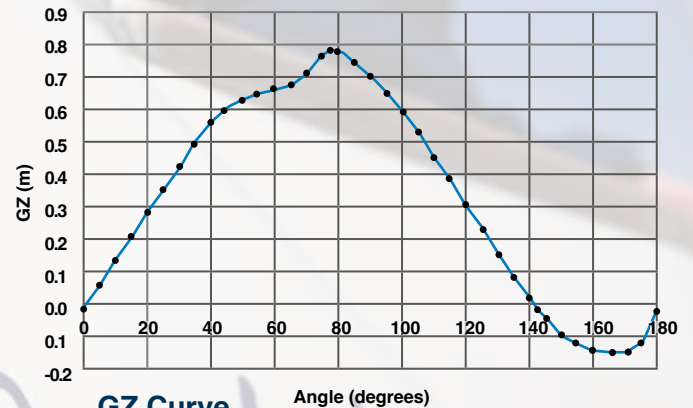
Main	49.6sq m	533sq ft
Yankee	54.5sq m	586sq ft
Staysail	16.7sq m	179sq ft
Spinnaker	167sq m	1797sq ft
Asymmetric Spinnaker	136sq m	1463sq ft

## Technical Data

Engine	85hp Nanni	
Fuel	455litres	100gal
Water	730litres	160gal
Designer	Stephen Jones	



**Polar Diagram**



**GZ Curve**

Rustler 44

# Rustler 44





The Rustler 44 is very much a yacht for the experienced and discerning sailor. She is built to the highest specification for serious blue water cruising and offers performance, longevity, comfort and value for money ...

*Rustler 44*

**Rustler Yachts**

---

Maritime Buildings, Falmouth Road  
Falmouth, Cornwall TR10 8AD

t: +44 (0) 1326 310120  
f: +44 (0) 1326 314092  
e: [info@rustleryachts.com](mailto:info@rustleryachts.com)  
**[www.rustleryachts.com](http://www.rustleryachts.com)**